



Designed for

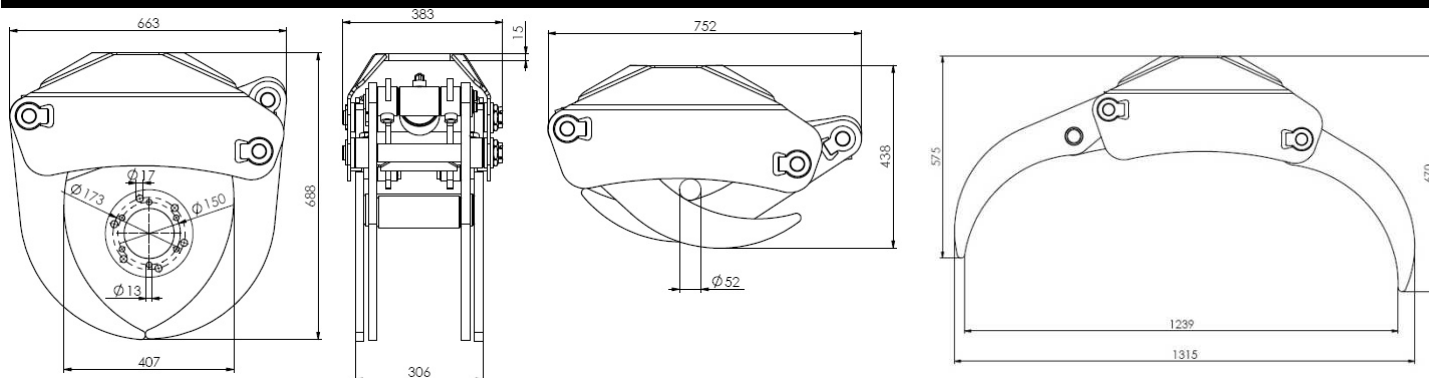
KESLA 15E energy wood grapple is designed for handling mixed silage and energy wood. Fast opening and closing of jaws combined with light weight have made this grapple popular. It is an excellent combination with chippers and energy wood trailers.

Technical data

Jaws closed, area (m ²)	0,18
Operating pressure (bar)	175
Compressive force, jaws closed (kN)	10,7
Opening time (50l/min)	1 s
Closing time (50l/min)	1,3 s
Weight (kg)	127
Lifting capacity (kg)	2000
Suitable for cranes (mtn)	5-7



Dimensional drawing

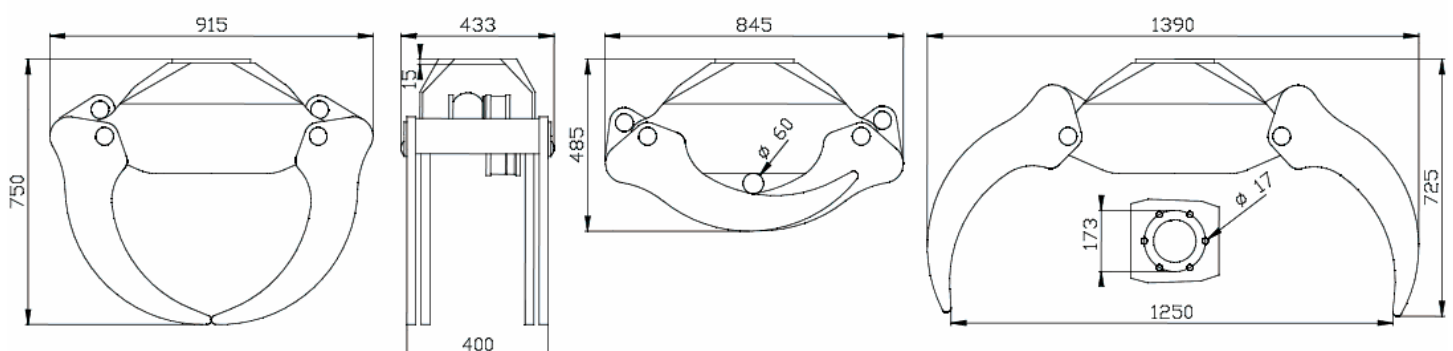


**Designed for**

KESLA 20E energy wood grapple is designed for handling mixed silage and energy wood. Fast opening and closing of jaws combined with compact size have made this grapple popular among chipper contractors. 20E is used also as sorting grapple in saw and pulp mills.

Technical data

Jaws closed, area (m ²)	0,18
Operating pressure (bar)	230
Compressive force, jaws closed (kN)	15,3
Opening time (50l/min)	1,1 s
Closing time (50l/min)	1,5 s
Weight (kg)	16
Lifting capacity (kg)	3000
Suitable for cranes (mtn)	5-9

**Dimensional drawing**



Designed for

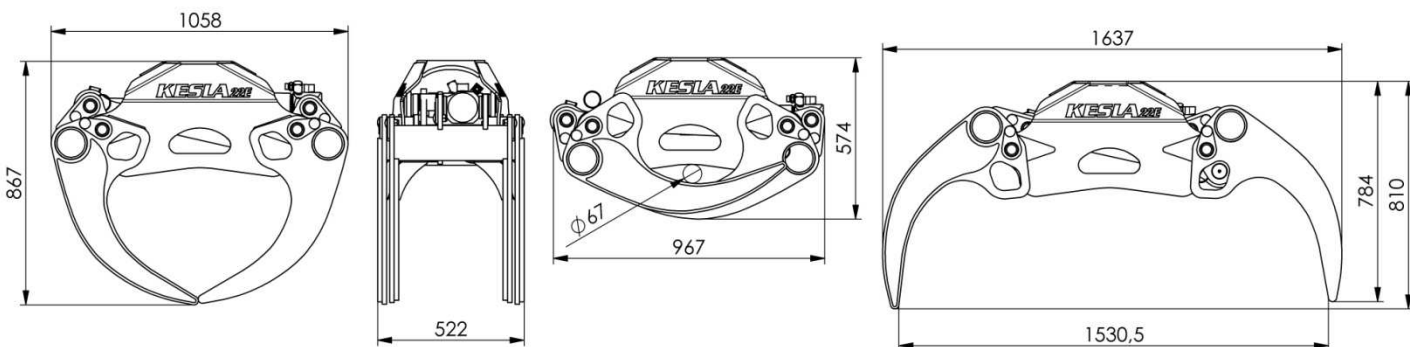
KESLA 22E energy wood grapple is designed for handling mixed silage and energy wood. Fast opening of jaws combined with massive compressive force and heavy structure have made this grapple popular. 22E is our recommendation for loading material to medium size chippers and energy wood trailers.

Technical data

Jaws closed, area (m ²)	0,22
Operating pressure (bar)	250
Compressive force, jaws closed (kN)	21
Opening time (50l/min)	1 s
Closing time (50l/min)	2,2 s
Weight (kg)	260
Lifting capacity (kg)	4500
Suitable for cranes (mtn)	10-24



Dimensional drawing

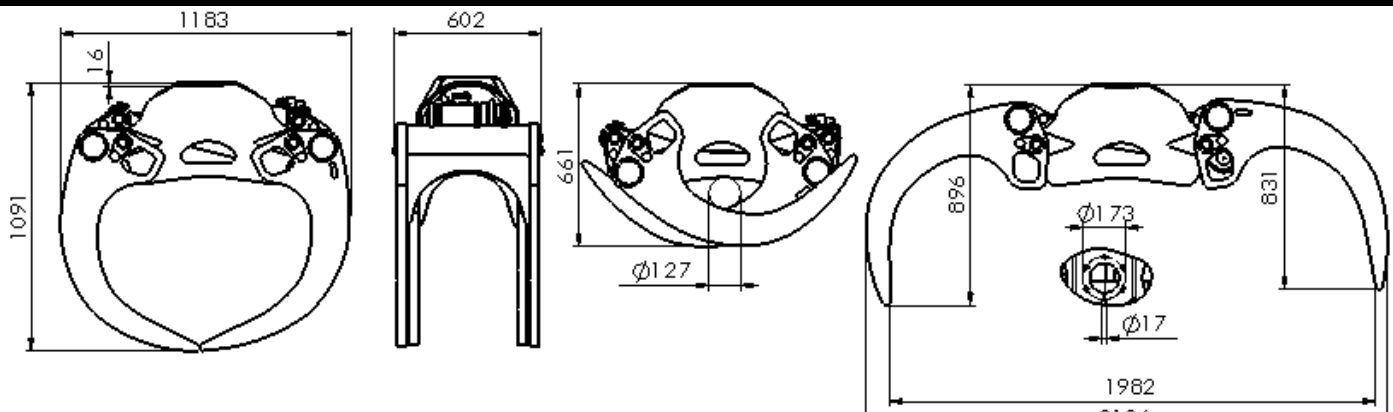


**Designed for**

KESLA 50E heavy duty grapple is designed for handling recycling and demolition material. Robust and heavy structure have made this grapple popular among grinder contractors. 50E is recommended for loading large amounts of material to grinders, chippers and energy wood trailers.

Technical data

Jaws closed, area (m ²)	0,46
Operating pressure (bar)	250
Compressive force, jaws closed (kN)	21
Opening time (50l/min)	2,1 s
Closing time (50l/min)	3,1 s
Weight (kg)	405
Lifting capacity (kg)	4500
Suitable for cranes (mtn)	10-24

**Dimensional drawing**



Designed for

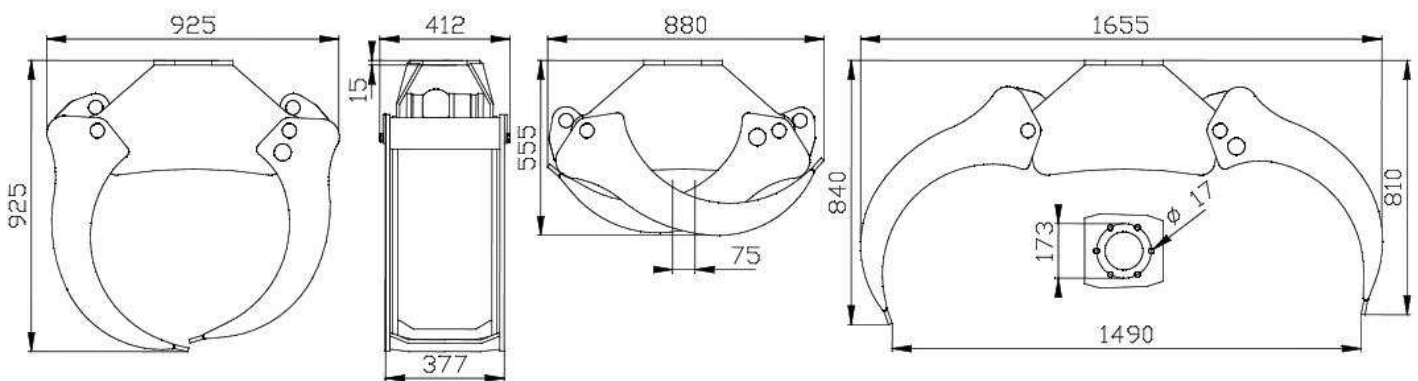
KESLA 29 grapple is designed for medium size forwarders. This grapple type is also used with small timber cranes.

Technical data

Jaws closed, area (m ²)	0,28
Operating pressure (bar)	230
Compressive force, jaws closed (kN)	12,8
Opening time (50l/min)	1,3 s
Closing time (50l/min)	1,9 s
Weight (kg)	165
Lifting capacity (kg)	3000
Suitable for cranes (mtn)	6-9



Dimensional drawing





Designed for

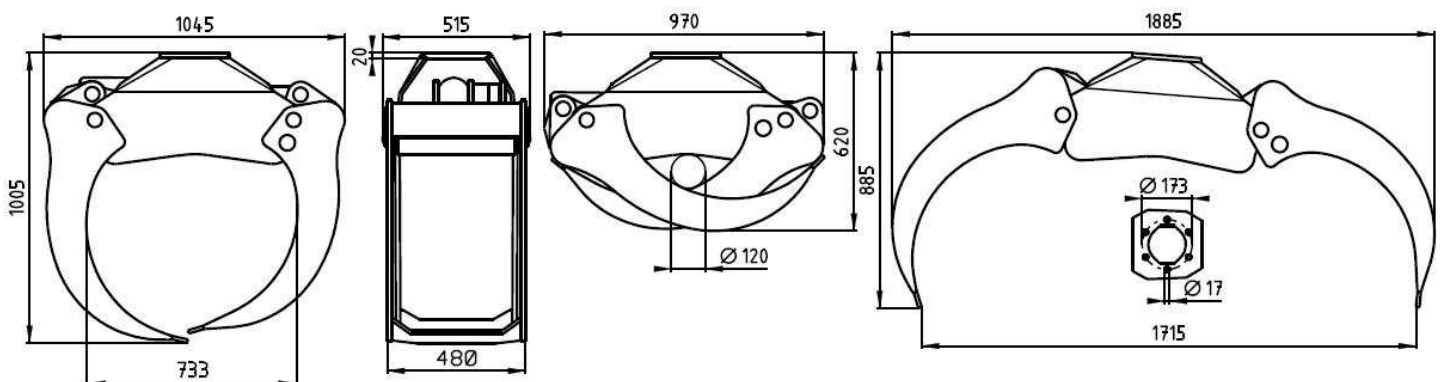
KESLA 38 grapple is designed for medium size logs and pulp wood. Compact size, weight and loading capacity qualifies 38 grapple as the most favourite with 9 mtn cranes.

Technical data

Jaws closed, area (m ²)	0,36
Operating pressure (bar)	230
Compressive force, jaws closed (kN)	17,5
Opening time (50l/min)	2 s
Closing time (50l/min)	2,9 s
Weight (kg)	224
Lifting capacity (kg)	4500
Suitable for cranes (mtn)	8-12



Dimensional drawing





Designed for

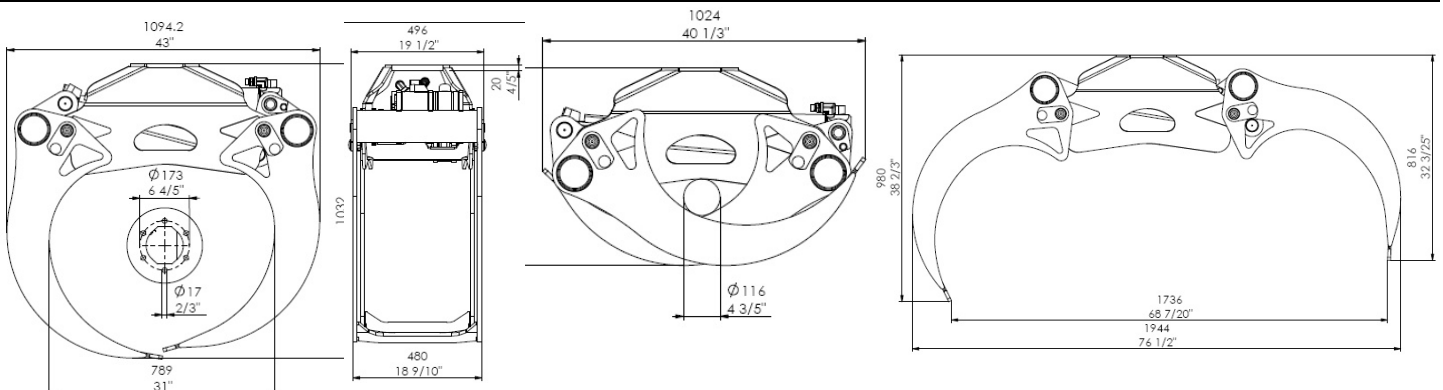
KESLA 41 timber grapple is designed to be all-purpose timber grapple. It is suitable for both pulp and saw wood stocks. Kesla 41 is our recommendation, when you have 10-14 mtn loader and all timber sortiments to load.

Technical data

Jaws closed, area (m ²)	0,41
Operating pressure (bar)	230
Compressive force, jaws closed (kN)	17,5
Opening time (50l/min)	2,1 s
Closing time (50l/min)	3,1 s
Weight (kg)	250
Lifting capacity (kg)	4500
Suitable for cranes (mtn)	8-12



Dimensional drawing





Designed for

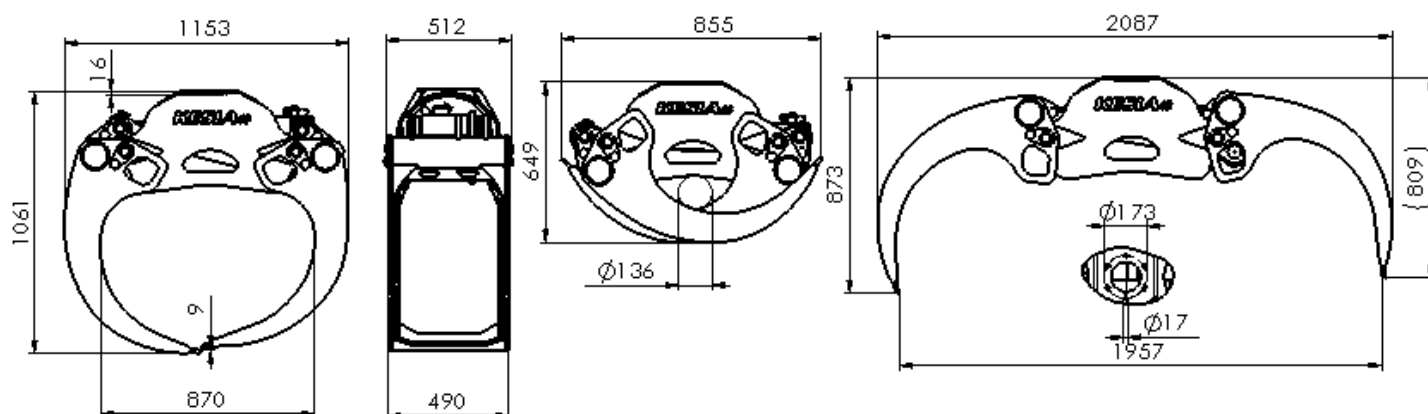
KESLA 46 grapple is our recommendation, when loading pulp wood and large stocks. 46 grapple is suitable for both mobile and stationary cranes.

Technical data

Jaws closed, area (m ²)	0,46
Operating pressure (bar)	250
Compressive force, jaws closed (kN)	18,2
Opening time (50l/min)	2,1 s
Closing time (50l/min)	3,1 s
Weight (kg)	245
Lifting capacity (kg)	4500
Suitable for cranes (mtn)	10-24



Dimensional drawing





Designed for

KESLA 50 grapple is our recommendation, for loading large quantities of pulp wood , large stocks or tree trunks. 50 grapple is suitable mobile loaders, excavator carriers and stationary loaders.

Technical data

Jaws closed, area (m ²)	0,50
Operating pressure (bar)	250
Compressive force, jaws closed (kN)	20,4
Opening time (50l/min)	2,1 s
Closing time (50l/min)	3,1 s
Weight (kg)	303
Lifting capacity (kg)	4500
Suitable for cranes (mtn)	10-24



Dimensional drawing

