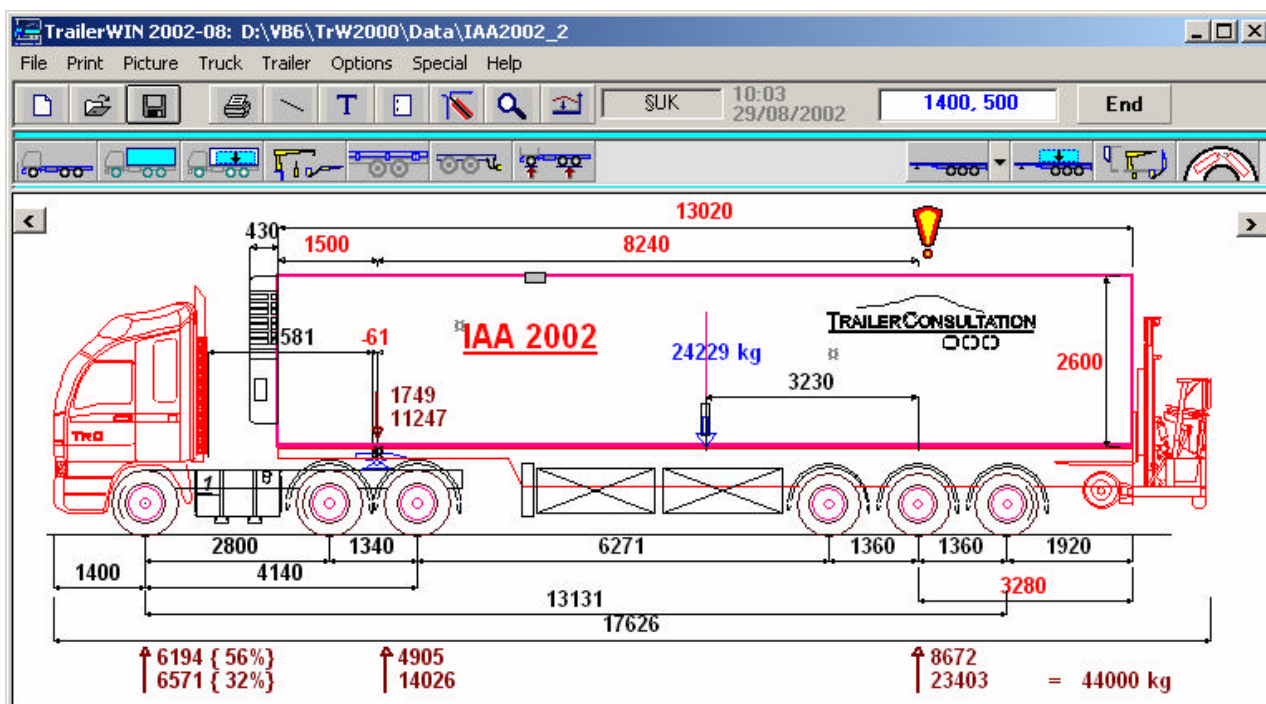


Software for commercial vehicle construction,
truck and trailer construction and body building



TrailerWIN

Truck and trailer constructions: weight distribution (axle loads), body building, mounting equipment (crane, tail gate lift, truck mounted forklift trucks, demountable, etc.), turning calculations,



CraneWIN

Crane stability calculations



FrameWIN

Subframe calculation for mounting a crane



CornerWIN

Turning calculations



BusWIN

Turning calculations for bus



BrakeWIN

Brake calculations for trailers

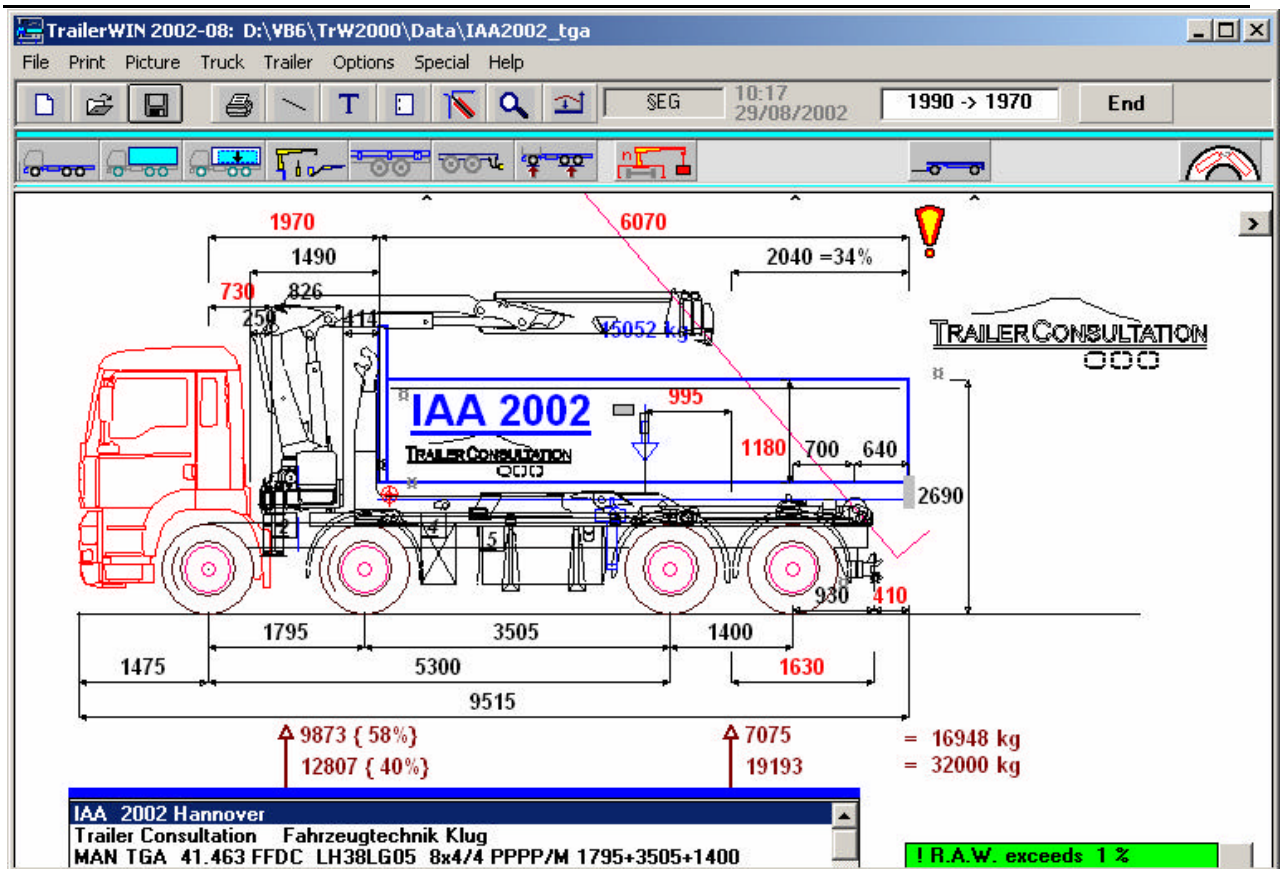


DrivelineWIN

Drive speeds and pulling force on tyres on all gears

TrailerWIN

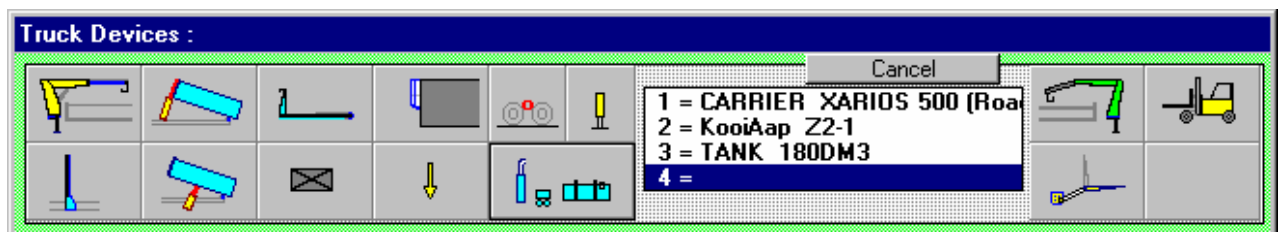
Software for commercial vehicle construction

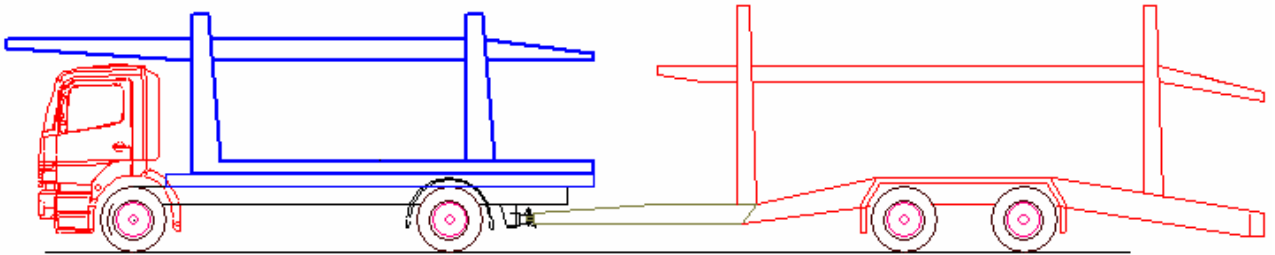
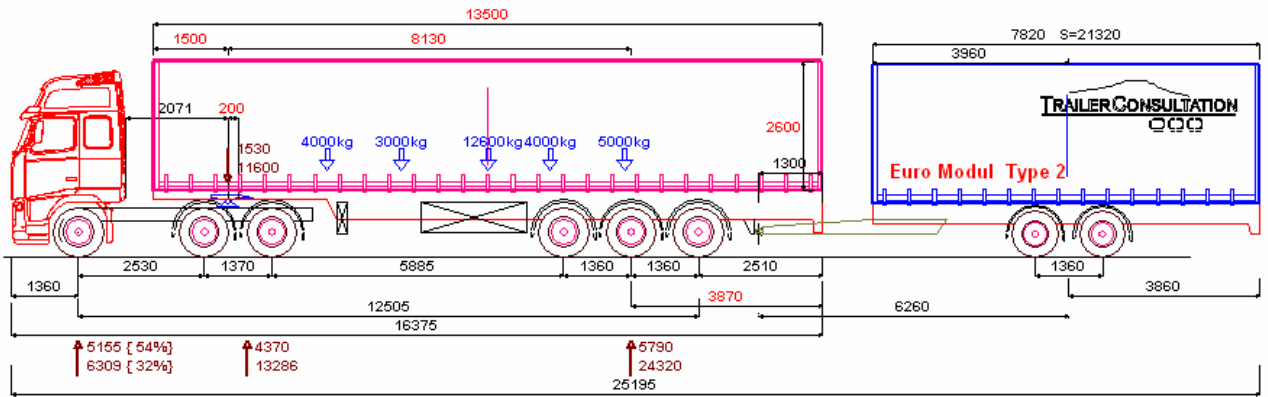


TrailerWIN does the truck body calculations in accordance with weight distribution, total vehicle length, load weight point etc.

Truck data can be imported from a file, or data can be given using the keyboard. TrailerWIN covers data on the most models by a wide range of truck manufacturers.

The truck and trailer may include various equipment: such as a crane, a tipping gear, a rear lifter, forklift truck and a refrigerator and a lengthened cab. TrailerWIN also contains data on some of the most common extra equipment, e.g. the weights and space requirements of certain tippers and crane types.



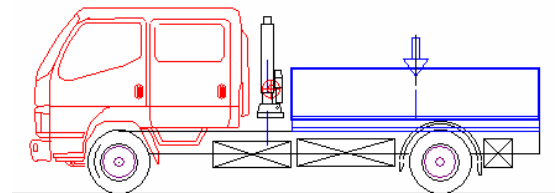
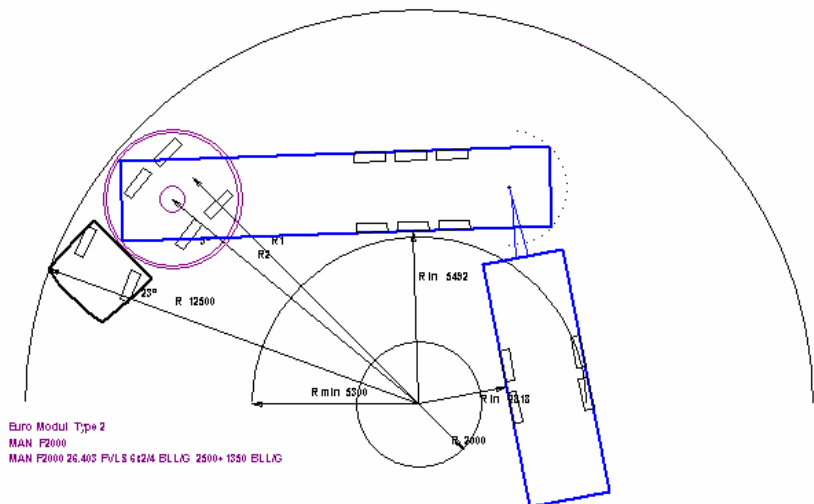


The current version of TrailerWIN identifies the following truck types: dual-axle, standard triple-axle (six-wheeler), middle axle type with steering front bogie, standard four-axle (eight-wheeler), eight-wheeler with triple bogie, and five-axle (ten-wheeler).

The trailer may have two, three, four or five axles and a semitrailer up to 4 axles. The program also identifies the single-axle (centre-axle) trailer, with a single axle or with dual-axle or triple-axle bogie.

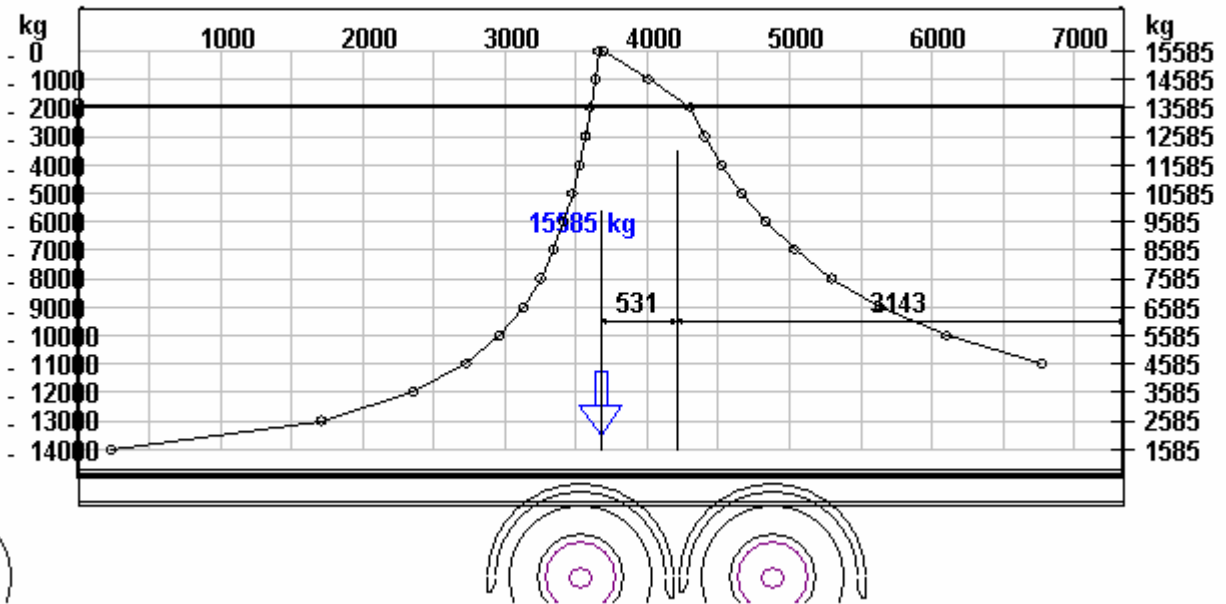
TrailerWIN allows you to select any truck and trailer combination. TrailerWIN will automatically optimize the dimensions of the trailer. Should these dimensions be found inadequate, they can be modified to suit the requirements.

TrailerWIN carries out regulation check-ups of a trailer and combination dimensions regarding the weight distribution, overhangs, corner distance and turning circle. The presentation of the truck cab is created as a real-life picture. The program provides a wide range of cab picture options, which can be supplemented later if necessary.



TrailerWIN calculates also the Load Curve and the Deloading Curve

Load Curve: Truck
 MERCEDES-BENZ SN 2535L 6X2 4500+1350 F015
 7348

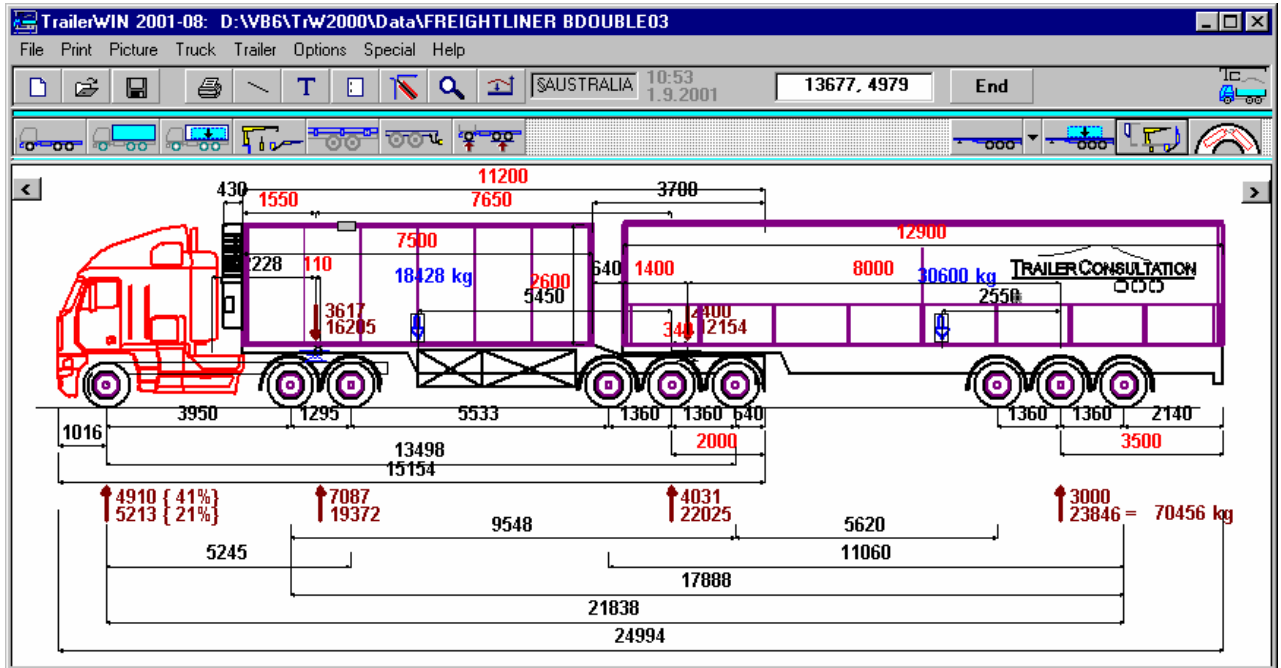


Deloading Curve:



fifth wheel weight max = 12809
 truck front axle weight max = 7125
 truck rear axle weight max = 13994

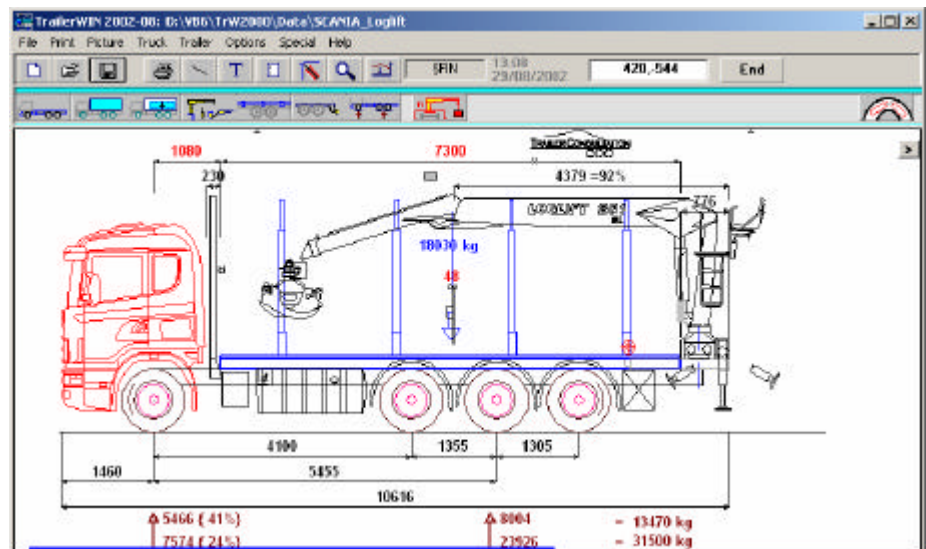




TrailerWIN is easy to run, however user should be familiar with the concepts of the calculations although no previous PC computing experience is required.

TrailerWIN runs on computers with Pentium processor and minimum of 16 Mb memory. The needed free space on hard disk is 300 Mb ... 500 Mb. Operating systems : Windows 95, W98, ME, NT, W2000 or XP.

TrailerWIN.
CraneWIN. FrameWIN
 Programs are available in following languages:
 Danish, Dutch, English, Finnish, French, German, Italian, Norwegian, Spanish, Swedish and Turkish.



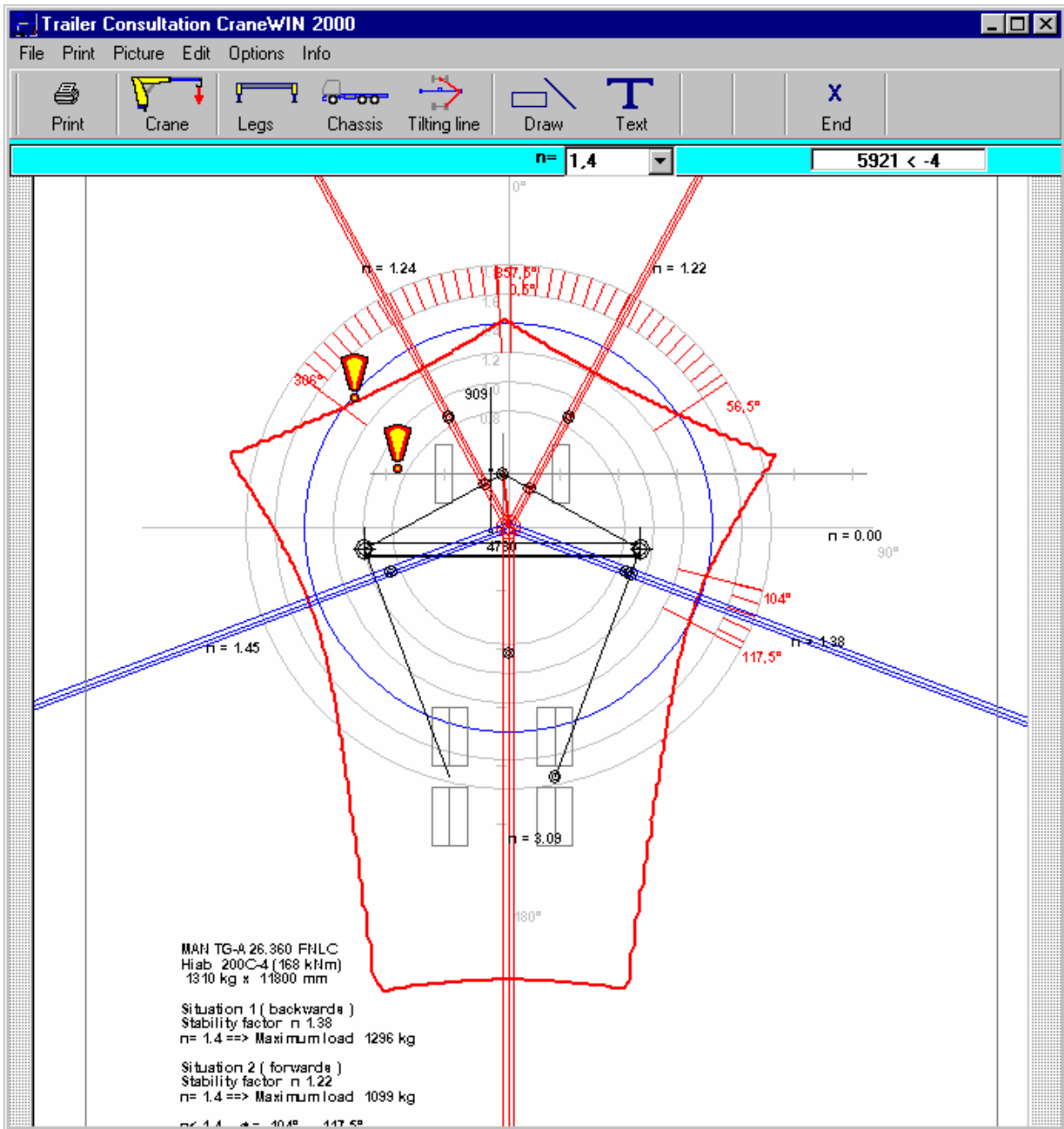
| Weights | | | | |
|-------------------------|-------|------|-------|-------|
| | x CoG | Fa | Ra | Total |
| + Chassis weight | | 5570 | 4885 | 10455 |
| + number of persons 1 | 0 | 70 | 0 | 70 |
| + body weight 0 kg/m | 4730 | 0 | 0 | 0 |
| 1 Cab protection wall | 940 | 99 | 21 | 120 |
| 2 LOGLIFT F 201 SL 80 A | 7555 | -780 | 2680 | 1900 |
| 3 GRAB X55_2 | 2160 | 134 | 91 | 225 |
| 4 TANK 600DM3 | 2500 | 373 | 327 | 700 |
| = weights unloaded : | | 5466 | 8004 | 13470 |
| + carrying capacity | 4730 | 2107 | 15923 | 18030 |
| = Weights loaded : | | 7574 | 23926 | 31500 |
| :: Gross Vehicle Weight | | 7500 | 24000 | 31500 |

File export formats:

- .DXF for CAD programs (AutoCAD, ...);
- .BMP for Paintbrush, Word, Excel,
- .TXT text data to text programs., Clipboard



CraneWIN A software for crane stability calculating



Circle diagram

CraneWIN gives a circle diagram with a stability factor n with different crane turning angles.

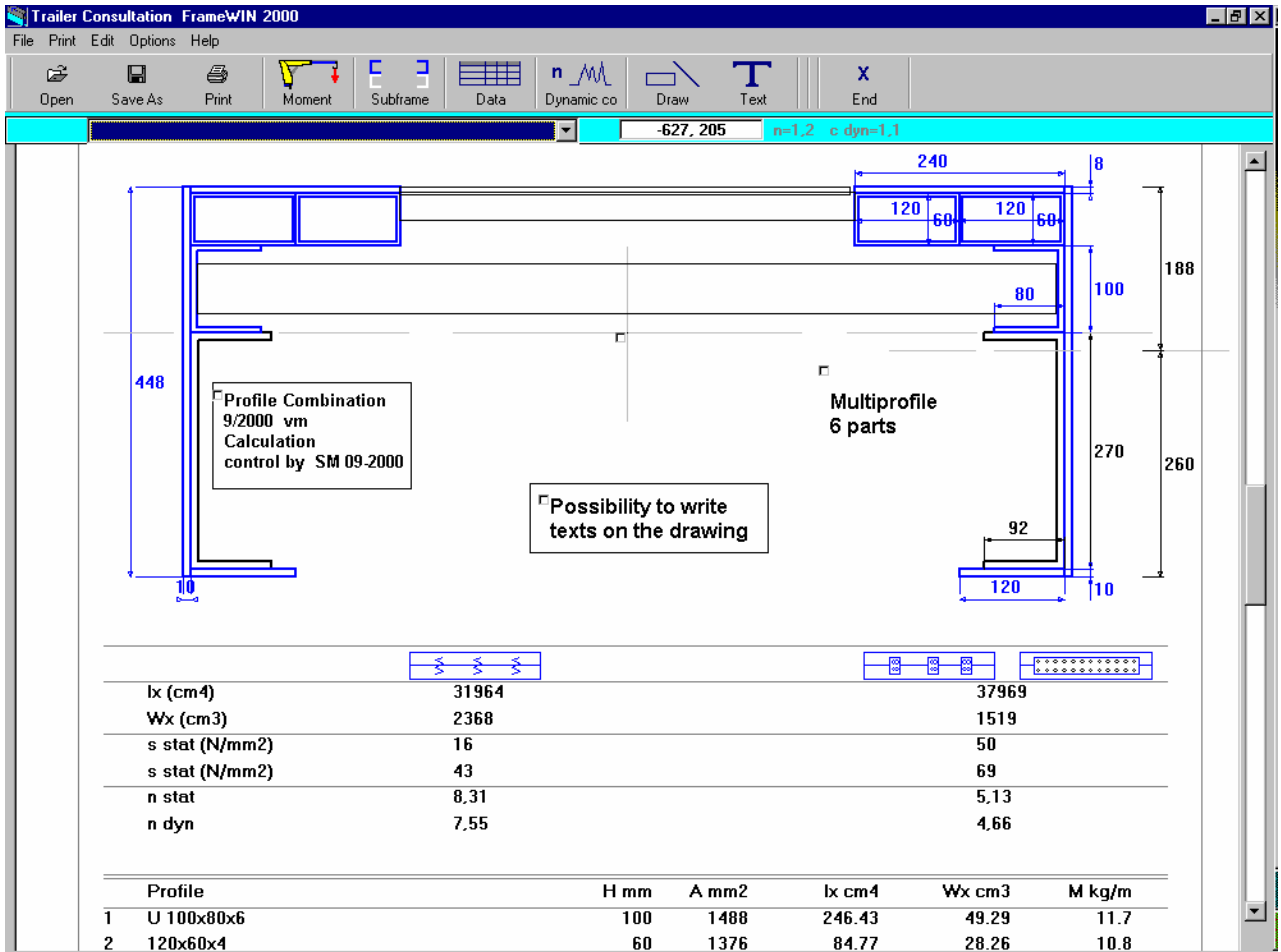
A straight line is displayed from the center of the circle to the direction in which the crane is turned. The stability factor to that direction is: a=0° straight forwards, a=90° straight angle to side, a=180° straight backwards.

The stability factors are shown in the form of different sized circles. The centre of the circles is the cranes slewing centre. The circle with the biggest radius stands for the stability factor n=1.8 and the smaller for: 1.6 , 1.4 , 1.2 , 1.0 , 0.8 . The chosen critical stability factor will show on the screen in a different color from the others. The figure is shown above the diagram in the toolbar.

In the diagram there are two stability factors as n-curves. One for each tilting line.



FrameWIN Subframe calculation



The FrameWIN screen will show pictures of the calculated Chassis Frame Profile and the Subframe Profile mounted on top of it. On the left side of the picture, beams are mounted flexibly. On the right side of the picture, beams are mounted with shear resisting plates.

Firstly with shear resisting mounting without the plates being calculated in strength calculation (mounting with many separate plates), secondly the plate being calculated in the strength calculation as a part of the beams (in this case the plate must be a continuous plate).

Below the beams You will see the calculation results for the combined beam - on the left side with flexible mounting and on the right side with mounting with shear resisting plates.

| | | |
|-------------------------------|--------|-----------------------|
| Second moment of area | lx | (cm ⁴) |
| Section modulus | Wx | (cm ³) |
| Stress (on the subframe) | s | (N/mm ²) |
| Stress (on the chassis frame) | s | (N/mm ²) |
| Safety Factor Static | n stat | |
| Safety Factor Dynamic | n dyn | |

Software is available in following Languages:

Danish, Dutch, English, Finnish, French, German, Italian, Norwegian, Spanish and Swedish.



CornerWIN Turning calculations

A software for complicated turning calculations



CornerWIN provides the following calculation possibilities:

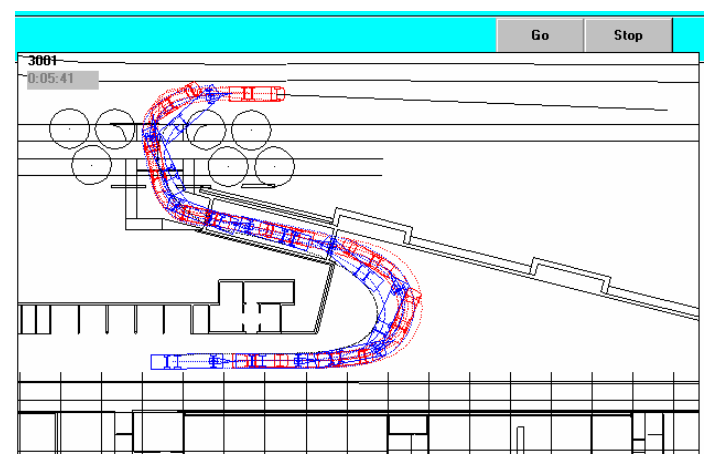
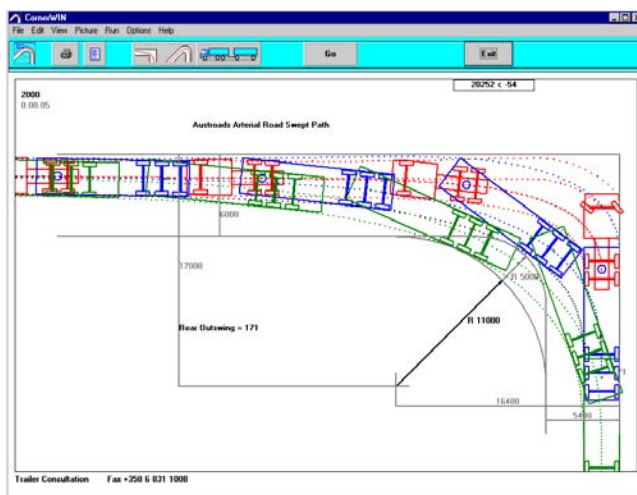
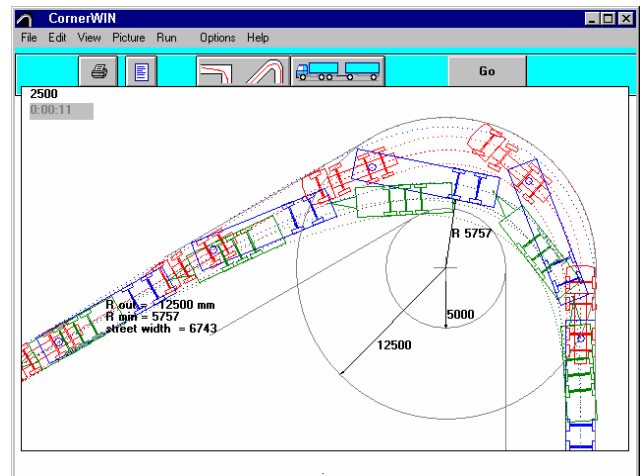
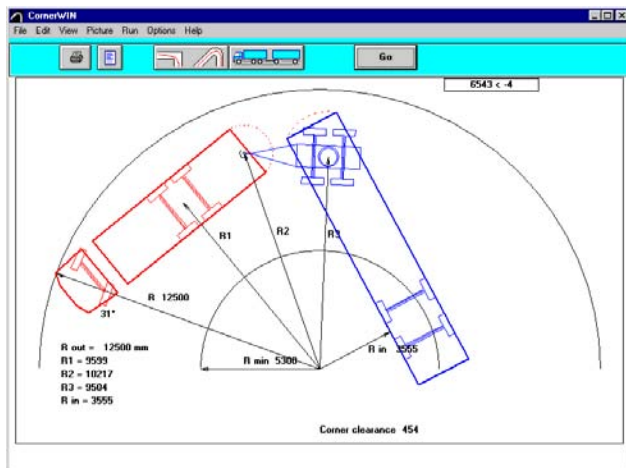
Turning in EU-circle, Turning in 120 deg arc, Turning in 180 deg arc, Circle with the chosen radius, 90 deg rectangular corner. (Swedish rule). Austroads Arterial Road Swept Path, Austroads Major Arterial Road Swept Path, Turning in 360 deg arc, Turning in arc, with chosen arc. Pull feature which allows You to drive the combination with the mouse.

CornerWIN has got the official approval from the AB Svensk Bilprovning in Stockholm, which is The Swedish Motor Vehicle Inspection Company.

'AB Svensk Bilprovning' is working to improve Road safety, environment and vehicle economy.

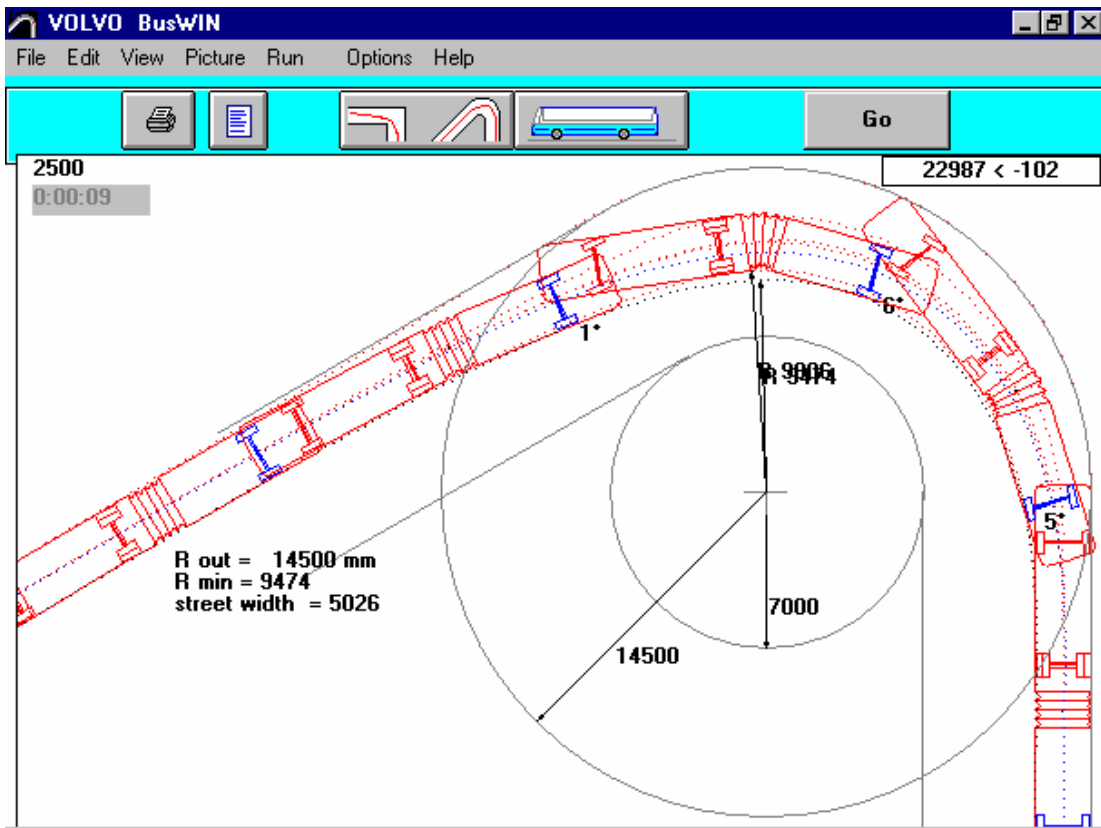
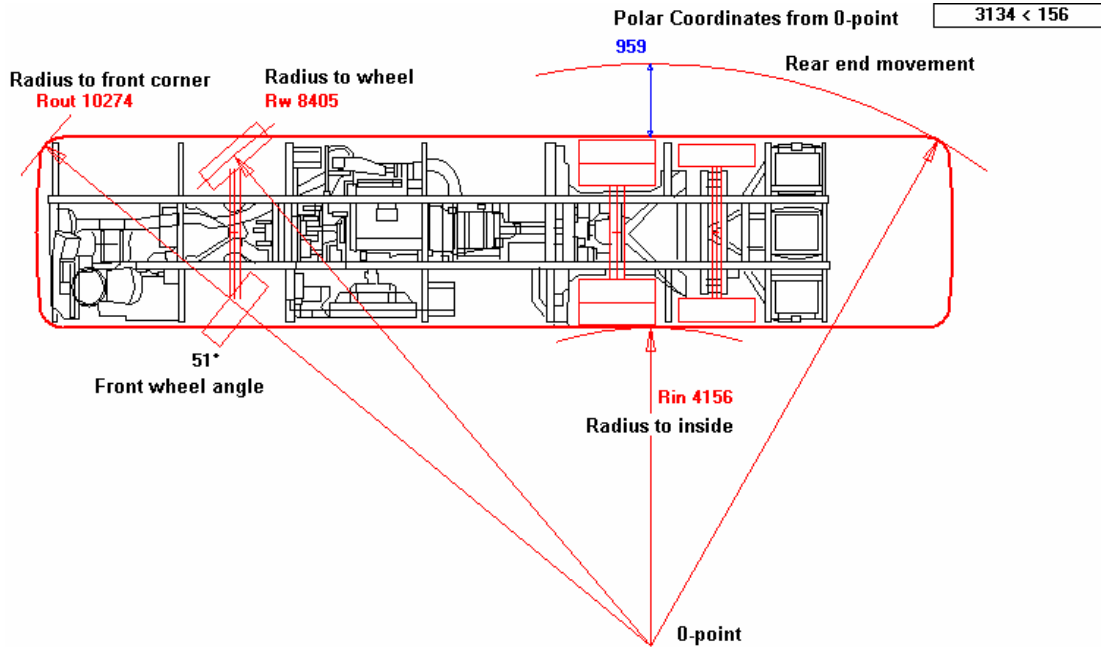
The picture is outputted in DXF-file so pictures can be transferred into CAD program.

CornerWIN is normally used in conjunction with TrailerWIN. The dimensions for the truck and trailer are chosen in TrailerWIN. It is also possible to use CornerWIN as a standalone module without TrailerWIN.



BusWIN Turning Calculations for Bus

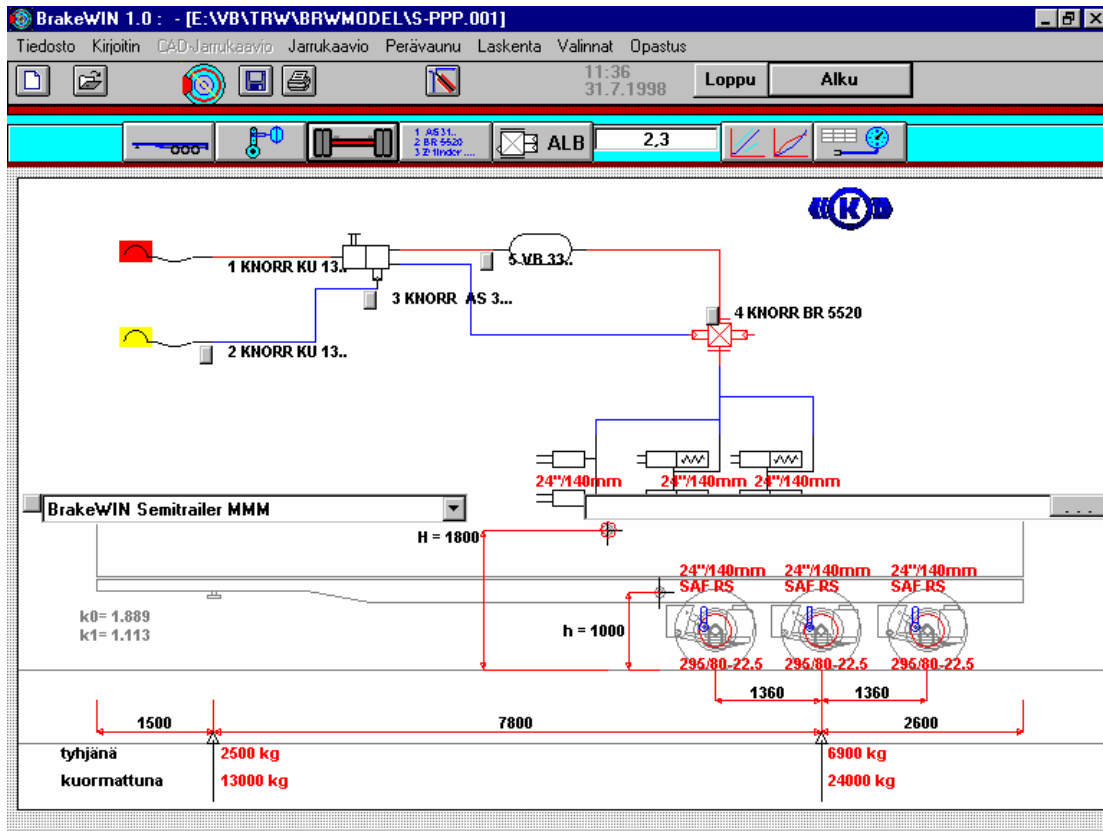
Calculations as for CornerWIN but specifically designed for buses.



Program languages: **CornerWIN, BusWIN** : English, Finnish, German, Swedish



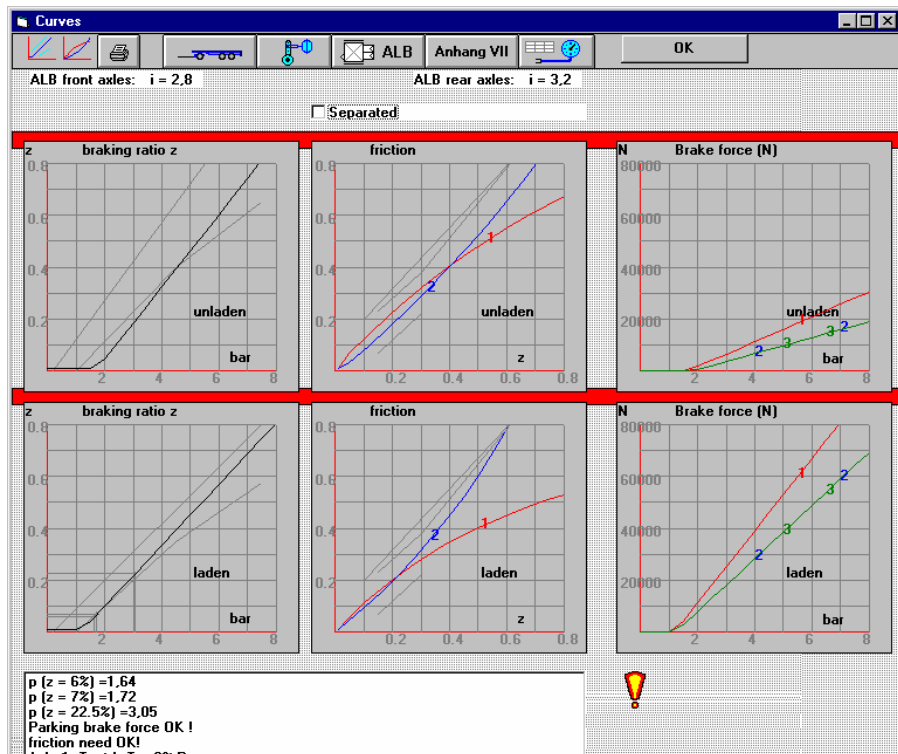
BrakeWIN A software for trailer brake calculation



BrakeWIN does the trailer brake calculations.

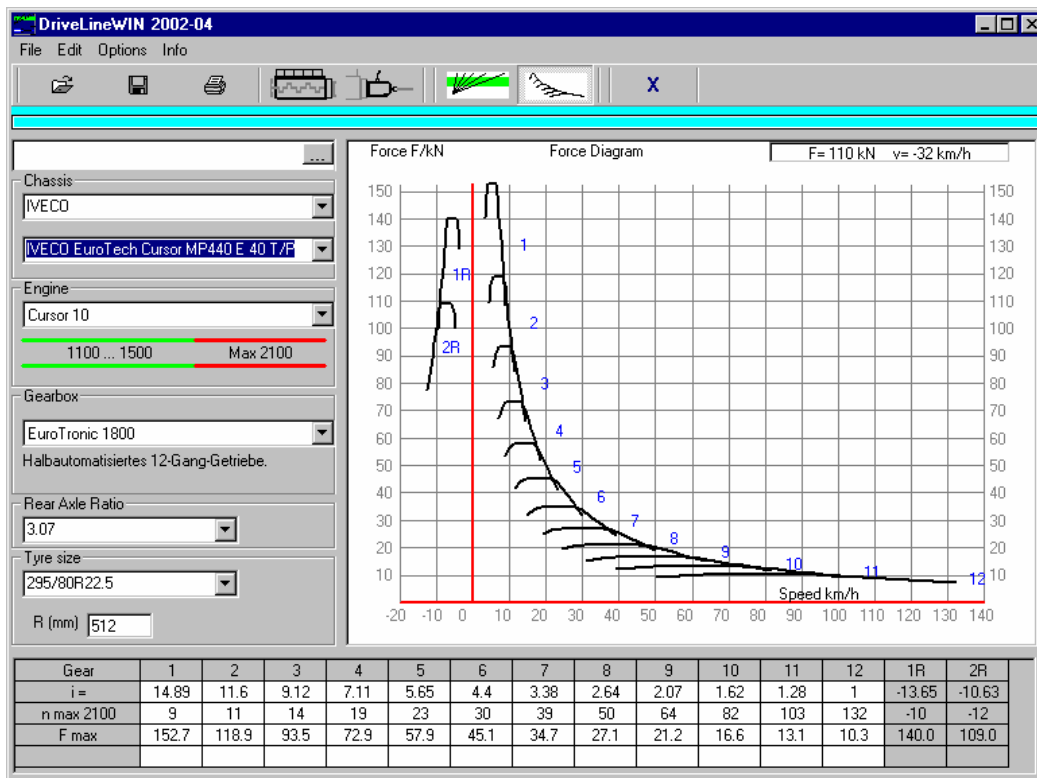
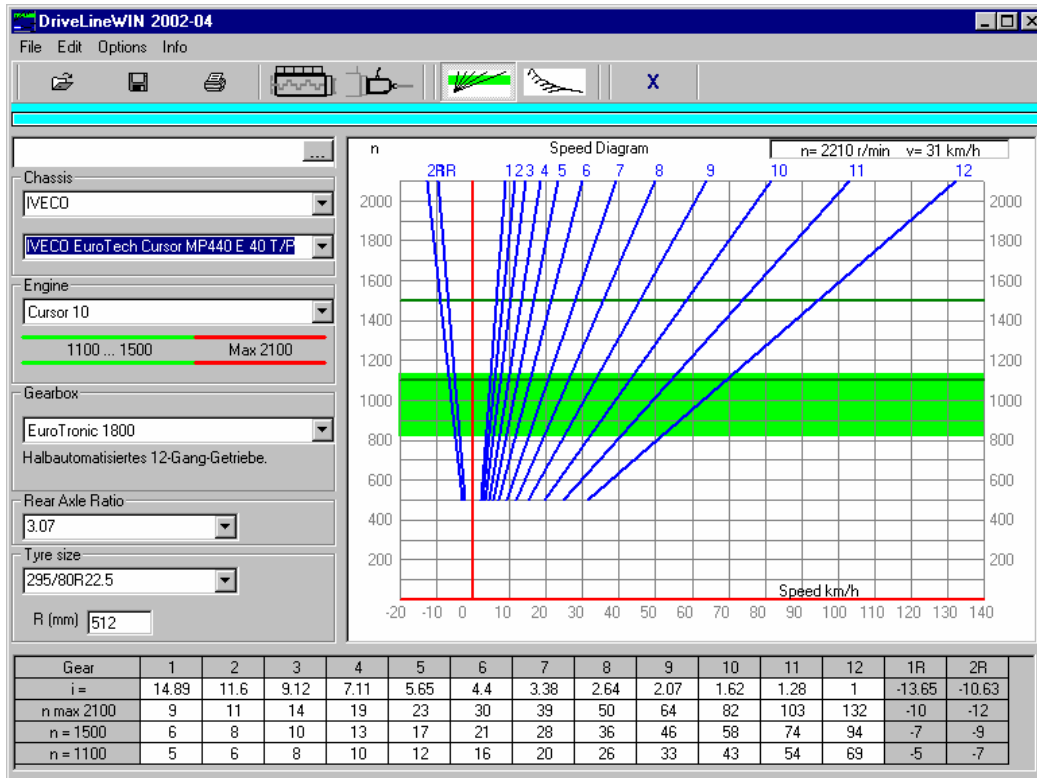
User chooses from listboxes : axles, tyres, brake cylinders, levers, valves, etc.

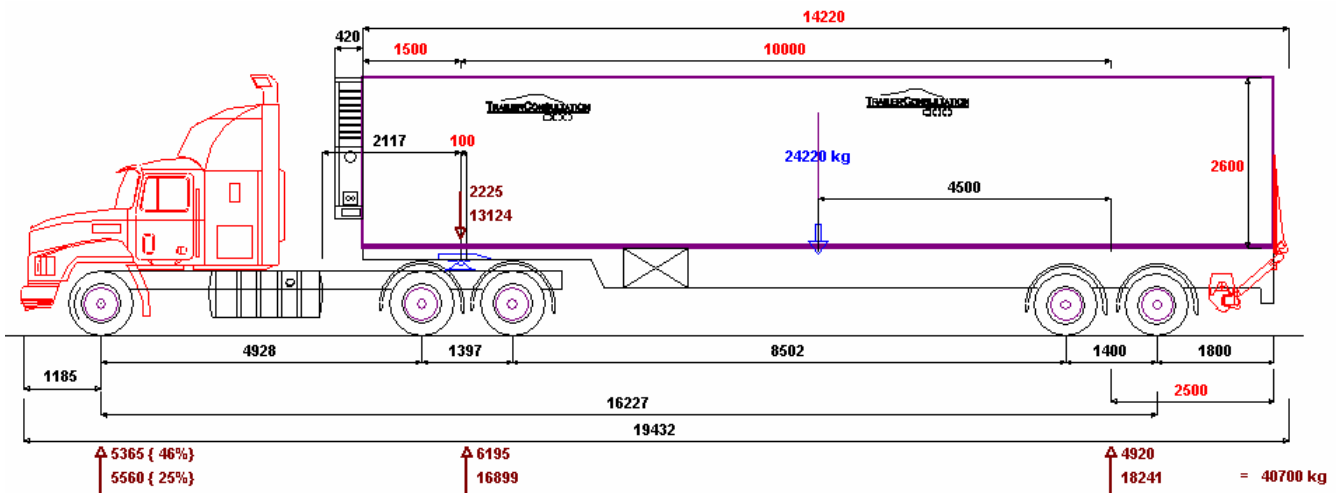
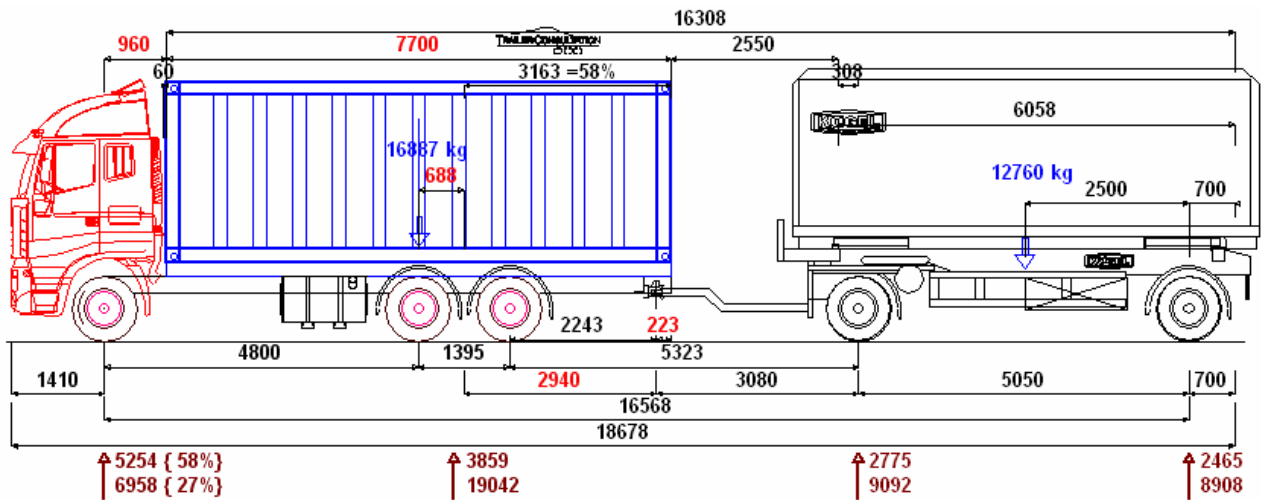
BrakeWIN makes calculations for braking ratio, friction, brake forces, etc.



DrivelineWIN

A software for calculating the drive speeds and pulling force on tyres on all gears.





TRAILER CONSULTATION

Postal address: Anterontie 5 FIN - 67400 Kokkola Finland

Telephone: +358 - 6 - 831 9905

Fax: +358 - 6 - 831 1008

Mr. Veikko Moisio +358 - 40 - 504 1295 Mobile

Mr. Sami Moisio +358 - 40 - 513 7745 Mobile

Web-site: WWW.TRAILERWIN.COM

E-mail: moisio@trailerwin.com

In IAA 2002 Commercial Vehicles exhibition in Hannover
Stand "Fahrzeugtechnik Klug" Halle 11, Stand G37

